



INFORMATION & CREDENTIALS PACK

Contact Details:
115 High Road
East Finchley N2 8AG
020 8883 9098
www.ef-electrical.co.uk

INFORMATION & CREDENTIALS PACK

INDEX

Introduction to EF Electrical Contractors Ltd	3
Recent Projects	4-7
Customer Testimonials	8-10
Customer Charter	11
Labour & Testing Rates & Services	12

Also Available...

Policies Pack

Containing:

- Anti-Bribery & Corruption Policy
- Code of Conduct
- Environmental Policy
- Equal Opportunities Policy
- Health & Safety Adviser Details
- Health & Safety Policy Statement
- Health & Safety Director / Manager Responsibilities
- Health & Safety Employee Responsibilities
- Health & Safety Risk Assessment Form

Certificates Pack

Containing:

- CIS Certificate
- Constructionline Certificate
- Employers' Liability Insurance Certificate
- ISO 9001 Certificate
- Limited Company Registration Certificate
- NICEIC Certificate of Enrolment
- NICEIC Certificate of Registration
- Trustmark Status
- VAT Registration Certificate

INTRODUCTION

From design to installation, testing, inspection & certification, working to BSEN ISO9001-2000 & 17th Edition BS7671 IEE; NICEIC registered EF Electrical is a full service contractor with vast experience and a longstanding reputation dating back to 1973.

Helpful; friendly and approachable: 80% of our work comes from recommendations. Our commercial assignments have taken in prestigious premises and we've worked for some leading industry names, but we have never forgotten our roots as local domestic electricians, & the importance of peace of mind and reliability.

Active involvement in local community projects is also incredibly important to us and we feel as commercial electricians, it's vital to have this grounded focus.

By investing heavily in staff development and motivation, we can offer the resources and expertise to fully manage projects of any size, on any contract basis, with a prompt turnaround.

Our motto "**Where Standards Matter**" is reflected in our commitment to delivering excellent services to the highest professional standards.

For more information on the company and its services, visit www.ef-elec.co.uk.

SERVICES SUMMARY

Checking and Testing

- PAT Testing
- NICEIC Periodic Inspections
- Landlord Safety Certificates
- Electrical condition checks
- Fire alarm & emergency lighting checks
- Electrical fault finding

Electrical Maintenance

- Reactive & scheduled maintenance
- Emergency callout service

Lighting

Design, installation, maintenance & repair of:

- Indoor & outdoor lighting
- Emergency & security lighting
- Car park lighting
- Communal area lighting
- Specialist & energy efficient lighting

Heating and Hot Water

Installation, maintenance & repair of:

- Solar pv & hot water
- Electric heating & hot water
- Electric showers
- Extractor fans

Safety and Security

Design, installation, maintenance & repair of:

- Fire alarms
- Integrated fire & security systems
- CCTV
- Remote switching
- Controlled access

Refurbishments

- Full and part refurbishments
- Electrical fit outs
- Full rewires
- Electric socket installation
- Fuse board replacement

Commercial & Industrial

- Mains work including new submains and rising mains
- Small power
- Fixed equipment supplies
- Intake room fit outs
- Lifts and motor room fit outs
- Installation & repair of fixed & freestanding electrical appliances
- IT/telecoms system installation & repair

RECENT PROJECTS

A selection of our most recent commercial projects follows:



PROJECT 2

DATE: JULY 2011 – DECEMBER 2012
CONTACT: TOM DOBROWOLSKI
TEL: 020 7729 9348
CLIENT: PARRITT LENG ARCHITECTS
JOB REF: 1 THOMAS MORE WAY, LONDON N2
VALUE: 100K

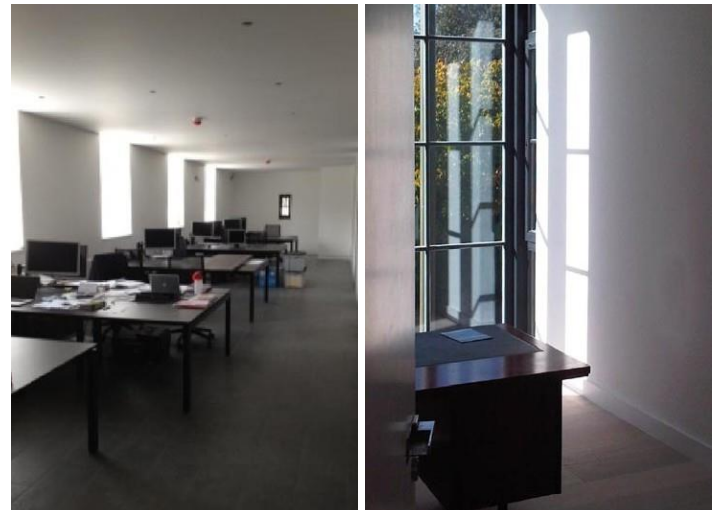
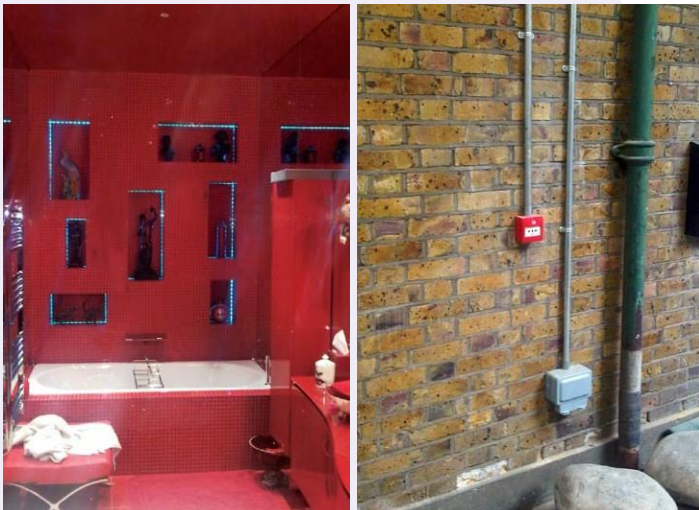
New build commercial office block. A three storey building with underground car park, very unusual and unique design of building. New lighting and power, mains work, submain work, disabled alarm system, fire alarm system, emergency lighting, lighting protection, air conditioning, outdoor lighting.



PROJECT 1

DATE: SEPTEMBER 2011 – JANUARY 2012
CONTACT: PATRICIA CRAWLEY
TEL: 01883 331 630
COMPANY: LONDON ROOM DESIGN
CLIENT: MINTY ARTS
JOB REF: 84 PECKHAM ROAD, LONDON SE15
VALUE: 250K

Refurbishment of an industrial unit into a new art gallery and work space, with private living quarter. Metal tray, 3 compartment containment and conduit work, lighting, small power, new mains and submain distribution, access control, disabled call system, fire alarm, emergency lighting, plant room wiring, outdoor lighting.



PROJECT 3

DATE: OCTOBER 2010 – FEBRUARY 2011
CONTACT: JOSEPH
TEL: 01322 292 097
COMPANY: WORLD MISSION AGENCY
CLIENT: WORLD MISSION AGENCY
JOB REF: NEW AUDITORIUM, DARTFORD
VALUE: 310K

Auditorium for prayer, 5000 person capacity. New lighting and power, new mains, submains, data cabling, emergency lighting, upgrade of outdoor lighting, power air conditioning system.

PROJECT 4

DATE: JUNE 2010 – FEBRUARY 2011
CONTACT: KEVIN BOYLE
TEL: 01462 450 555
COMPANY: MP BUILD
CLIENT: GARY MIDDLEDITCH
JOB REF: CANFIELD GARDENS, LONDON NW6
VALUE: 100K

Private, newly modernised house. New basement with swimming pool, sauna and Jacuzzi. Intelligent lighting and power system, new audio visual wiring, new intelligent heating system. Power to swimming pool, sauna and steam room. Door entry system, fire alarm system, data cabling, mains work and outdoor lighting and power.



PROJECT 5

DATE: AUGUST 2010
CONTACT: ALAN CURTIS
TEL: 01707 659 222
COMPANY: NEWLANDS CONSTRUCTION LTD
CLIENT: ENFIELD BAPTIST CHURCH
JOB REF: REFURBISHMENT OF CHURCH HALL
VALUE: 20K

Refurbishment and redesign of main church, new lighting and power, new circuit unit.

PROJECT 6

DATE: FEBRUARY 2011 – APRIL 2011
CONTACT: PATRICIA CRAWLEY
TEL: 01883 331 630
COMPANY: FLATT CONSULTING
CLIENT: BELVEDERE MANAGEMENT COMPANY LTD
JOB REF: BELVEDERE COURT
VALUE: 80K

Supply and fit new Ryefield fuse boards to each block, renew fifty-six submains, one to each flat. Replace landlords' consumer units to all blocks, upgrade landlords' lighting and power circuits, upgrade landlords' emergency lighting.

PROJECT 7

DATE: JULY 2011
CONTACT: KEVIN BOYLE
TEL: 01462 450 555
COMPANY: MP BUILD
CLIENT: NEW TEACHING & LIBRARY BLOCK
JOB REF: MOUNT STEWARD JUNIOR SCHOOL
VALUE: 30K

New build classroom block with library. Lighting, power, extractor fans, heating system, fire alarm, emergency lighting, outdoor lighting.

PROJECT 8

DATE: JUNE 2010 – SEPTEMBER 2011
CONTACT: KEVIN BOYLE
TEL: 01462 458 837
COMPANY: MP BUILD
CLIENT: ROE GREEN JUNIOR SCHOOL
JOB REF: ECO BUILDING
VALUE: 30K

New build, new kitchen and teaching block / eco building. Intelligent lighting system - lighting and power, extractor fans, solar power supply, fire alarm, emergency lighting, outdoor lighting, heating system.



PROJECT 9

DATE: SEPTEMBER 2011
CONTACT: ROB
TEL: 020 7837 0404
COMPANY: ST GILES COLLEGE
JOB REF: 154 SOUTHAMPTON ROW, LONDON WC1B
VALUE: 50K

NICEIC upgrade work, intelligent lighting, emergency lighting.

PROJECT 10

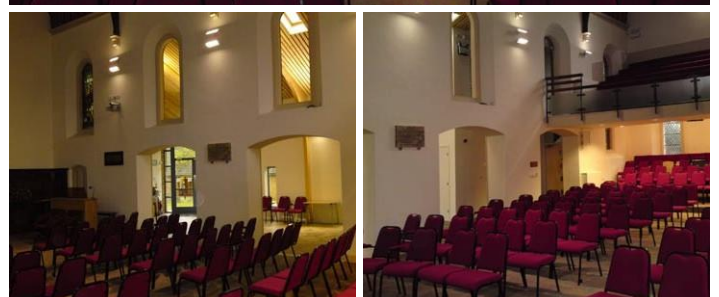
DATE: SEPTEMBER 2010 – DECEMBER 2010
CONTACT: KEVIN BOYLE
TEL: 01462 450 555
COMPANY: MP BUILD
JOB REF: UNIT 5 CRANBOURNE INDUSTRIAL ESTATE, POTTERS BAR
VALUE: 45K

Full rewire of a light industrial and office block and warehouse unit. Lighting, small power, emergency lighting, fire alarm, burglar alarm.

PROJECT 11

DATE: JUNE 2010 – OCTOBER 2010
CONTACT: KEVIN BOYLE
TEL: 01462 450 555
COMPANY: MP BUILD
JOB REF: ST MARKS CHURCH, LONDON COLNEY
VALUE: 55K

Full rewire of church, kitchen, offices and other rooms. New mezzanine. Full intelligent lighting system, small power, data sockets, AV system, sound system. Fire alarm, emergency lighting, access control, outdoor lighting.



PROJECT 12

DATE: SEPTEMBER 2010 – JUNE 2011
CONTACT: MAX MAXAMILLION
TEL: 020 8514 0636
COMPANY: GUMBALL 3000
JOB REF: 219 WESTBOURNE GROVE, LONDON, W18
VALUE: 60K

Modern town house development. Intelligent lighting system, full rewire of all services, small power. New extension. Fire alarm, burglar alarm, AV system, door entry system.

PROJECT 13

DATE: SEPTEMBER 2010 – JANUARY 2011
CONTACT: DARREN SHERHEARD
TEL: 020 8686 5522
COMPANY: STP SOLUTIONS LTD
CLIENT: UNITED SYNAGOGUES HQ
JOB REF: 305 BALLARDS LANE, LONDON N2
VALUE: 20K

Refurbishment of three office floors. Lighting, small power, data and mains work.

PROJECT 14

DATE: OCTOBER 2011
CONTACT: JACK PANDELI
TEL: 020 7561 7440
COMPANY: LAZARI INVESTMENTS
JOB REF: SHROPSHIRE HOUSE, 179 TOTTENHAM COURT ROAD, W1
VALUE: 10K

Office refurbishment. Lighting and small power.

PROJECT 15

DATE: MARCH 2011 – JUNE 2011
CONTACT: KEVIN BOYLE
TEL: 01462 450 555
COMPANY: MP BUILD
JOB REF: 28-30 HETLEY ROAD, LONDON W12
VALUE: 25K

Small development of eight flats: one bed and two bed units. Complete rewires, new submains, new mains area. Specification to one building very high.

PROJECT 16

DATE: JUNE 2011 – SEPTEMBER 2011
CONTACT: KEVIN BOYLE
TEL: 01462 450 555
COMPANY: MP BUILD
JOB REF: 26-28 OXFORD STREET, LONDON W1
VALUE: 20K

Fire damaged commercial unit. Renew mains, lighting, power, fire alarm, air conditioning wiring. Lighting for store designed, supplied and installed by EF Electrical.

PROJECT 17

DATE: JULY 2011
CONTACT: KEVIN BOYLE
TEL: 01462 450 555
COMPANY: MP BUILD
CLIENT: SPRINGWELL INFANT SCHOOL
JOB REF: SPEART LANE, HESTON TW5
VALUE: 20K

New classroom block consisting of two classrooms, one disabled toilet, one store room, full wired submain, energy efficient lighting system, small power, fire alarm, emergency lighting, disabled call point system, shower circuit and outdoor lighting.

PROJECT 18

DATE: SEPTEMBER 2011 – DECEMBER 2011
CONTACT: RAPINDA
TEL: 020 8514 0636
COMPANY: TASK SERVICES LONDON LTD
JOB REF: 36 FREEGROVE ROAD, LONDON, N17
VALUE: 30K

Small development of luxury flats, very high specification on lighting and power. Complete system installed including emergency lighting, fire alarm, mains work and submain.



TESTIMONIALS

“EFE have a ‘can do’ philosophy and have proved to be very flexible and reliable. They are keen solution providers with expert opinion and a professional attitude. The team at EFE are willing to put in the hours to achieve project milestones and work really well with other contractors to achieve results. They were a pleasure to have on site.”



London Rooms Design

Katie McCrum, Managing Director, London Rooms Design Limited
4 St Augustines Rd London NW1 9RN, www.londonroomsdesign.co.uk
(£150,000 Commercial Works, Peckham April 2012)

“I just wanted to say a big thank you to you and your team for the excellent service and installation of the tracking system at the Armani Casa store in Bond street. As you understand, installing a track system while we are trading was a lot to ask. However the work men were so polite, efficient and worked in such a manner that did not interfere with the trading of our business. Once again thank you for your personal involvement and I will be contacting you for further works in the future.”



Mr. Lee Hunnisett De Beer, General Manager, Armani/Casa UK
113 New Bond Street, London W1S 1DP, www.armanicasa.com
(Retail Premises Installation, Bond Street 2011)

“ We are a church in north London on a site with a church, 3 cottages, a church hall and minister’s house. In 2007 our insurance company asked us to have all our electrics tested and to obtain confirmation that all was satisfactory. As this was going to be a large job, we put it out to tender and chose EF Electrical Contractors as they produced the most competitive quote. As the testing went on, a number of problems were encountered in the hall, the church and the minister’s house which involved a lot of rewiring. As we have a school on site which is our main source of income, EF Electrical Contractors had to work during the school holidays. The whole job took one year to complete.

The work was carried out efficiently and effectively. The workmen came on time and worked hard each day they were here. The manager, Dino Loizou, was always helpful in planning each stage of the work in what became quite a complex project. In the end the entire chapel needed rewiring. The workmen had to lift floorboards, lay cable in difficult areas and work around our schedule. In the afternoon the church would look like a building site with tools, sawdust, cabling and bits of carpet all around. By 5pm the workmen had ensured that everything was tidy, hoovered and looked as if they had never been. This was important as we had evening events and needed to have the chapel clean. Everyone who worked on site was helpful and polite. They explained the work to me as they went along and kept me informed of progress. In particular Mihails Kudrjaviskis, their qualified electrician took control of the project and reassured me of their work at every stage. We definitely can recommend EF Electrical Contractors to others.”



Ms Leighton Cole, Chapel Administrator, Rosslyn Hill Chapel
3 Pilgrim’s Place London NW3 1NG, www.rosslynhillchapel.com
(Testing & Rewire, Hampstead 2011)



Thank you so much Dino. The residents are very happy.



Karen Andrews, CJ Delemere International
Re: 18 - 26 Fortis Court, Muswell Hill, London N10 3BH
(Mansion Block Works, Muswell Hill 2011)

RESIDENTIAL CUSTOMER TESTIMONIALS

“ Just a quick note to express my appreciation for the way you handled my small job at the above address this morning. The electrician was on time, knew in advance what he had come to do, analysed the problem quickly and effectively and took the necessary action all in the space of under a half hour. He was also very pleasant with it! I was very impressed and I felt the cost was very reasonable. ”

Richard Gold, 39 Oakleigh Avenue N20

“ I just wanted to feedback on what an excellent job Jason did at our house on Friday. He’s fixed all the things that were broken, and our house now has lots more plug points so I’m not always tripping over wires. Jason was helpful, courteous and efficient and we’d have no hesitation in recommending East Finchley Electricals to anyone who wanted some electrical work done to an excellent standard by great people. I’m happy for you to post my comments, and to be a reference - very glad to help such an excellent business. ”

Vivienne, 20 Huntingdon Road

CUSTOMER CHARTER

GOOD PRACTICE

EF Electrical aims to provide the highest quality service for both existing customers and new customers. We are committed to customer satisfaction and offer the following guarantees:

Enquires:

We guarantee to deal promptly and efficiently with customer enquiries and provide free written estimates which clearly explain all the costs involved.

Advice:

We are qualified to provide sound advice on all matters concerning electrical installations, lighting, heating, communication systems and where appropriate, will discuss requirements in advance of an estimate being made

Installation:

We guarantee to carry out installations quickly and with the minimum possible disruption. All work complies with current and relevant regulations

Guarantees:

Installation and maintenance work carried out by our engineers is guaranteed against faulty workmanship and materials for 12 months from the date of installation, provided that the equipment has not been misused or damaged by the user and payment has been received in full.

Insurance:

We are insured against injury to you and damage to your property whilst work is carried out. Any claims for damage caused by faulty installation of equipment are also covered by this insurance.

CUSTOMER COMPLAINTS

EF Electrical has a scheme in place promoting excellence of service. However, should an issue arise that gives a customer cause for complaint, procedures are in place to ensure it is dealt with speedily and, wherever possible, resolved in an amicable manner.

Complaints Procedure:

In the instance of any complaint, we will try to resolve it as quickly as it possible. The EF Electrical Customer Charter is your guarantee of quality whenever you have work carried out by us.

The Charter protects you in three ways:

1. All installation and maintenance guaranteed against faulty workmanship and materials / parts for twelve months.
2. Set procedures for the handling of any arising customer complaints through our ISO9000 Quality System ensures the very highest standards of customer service.
3. If we fail to meet our obligations, the National Inspection Council (NICEIC) will step in to protect you. They can be contacted on: 020 7564 2323.

LABOUR AND TESTING RATES AND SERVICES

All prices exclude VAT / Congestion Charge / Parking

STANDARD LABOUR RATE

FIRST HALF HOUR: £75

THEREAFTER: £18.75 per fifteen minutes all plus VAT

DAY RATE: £370 plus VAT

RESPONSE TIMES:

Emergency call out – within 4 hours

Maintenance works – within 24 hours

PAT TESTING

5 -8 APPLIANCES: £50

8-10 APPLIANCES: £65, then £3.50 per appliance

OVER 30 APPLIANCES: £3.50 per appliance

OVER 50 APPLIANCES: £2.85 per appliance

OVER 100 APPLIANCES: £2.35 per appliance

WHITE GOODS & CONSUMABLES

Competitive prices are offered for all white goods and consumables. For areas local to London N2 delivery is free on all white goods and consumables including: Washing machines, microwaves, gas and electric cookers, heaters, fans, light fixtures and fittings, light bulbs & fluorescent tubes, PCs and consumables.

NICEIC TEST AND INSPECTION PRICE GUIDE

For areas local to London N2:

1 BED FLAT: £100

2 BED FLAT: £130

3 BED MAISONETTE: £160

3 BED FLAT / HOUSE: £160

4 BED HOUSE: £220

5 BED HOUSE: Would require an estimate

6 BED HOUSE: Would require an estimate

Full NICEIC certification will be issued, along with an estimate if any remedial works are required to bring the installation up to BS7671 standards.

Services include:

- Completion certificates for new installations
- Test and connect certificates for new suppliers
- Emergency lighting testing
- Fire alarm commission for new installations
- Periodic testing



